



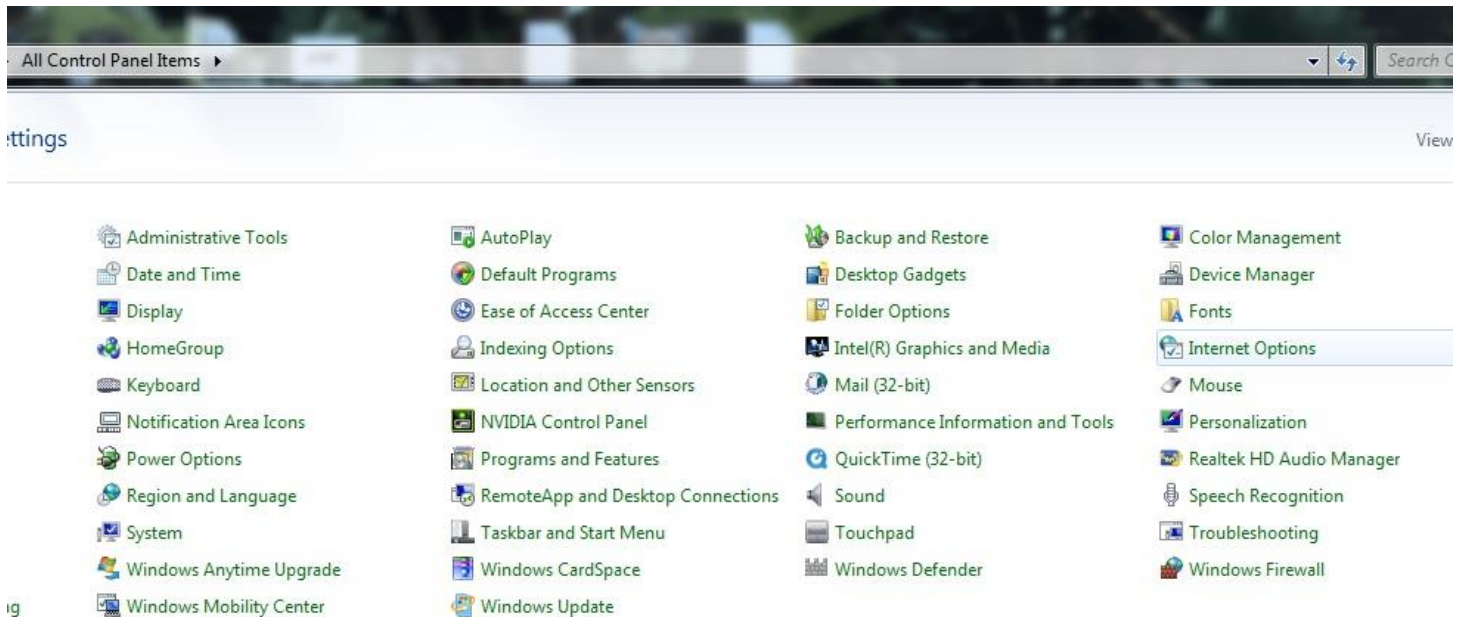
USB ANT+ Dongle

Troubleshooting setup guide

Power software cannot detect ANT+ USB device

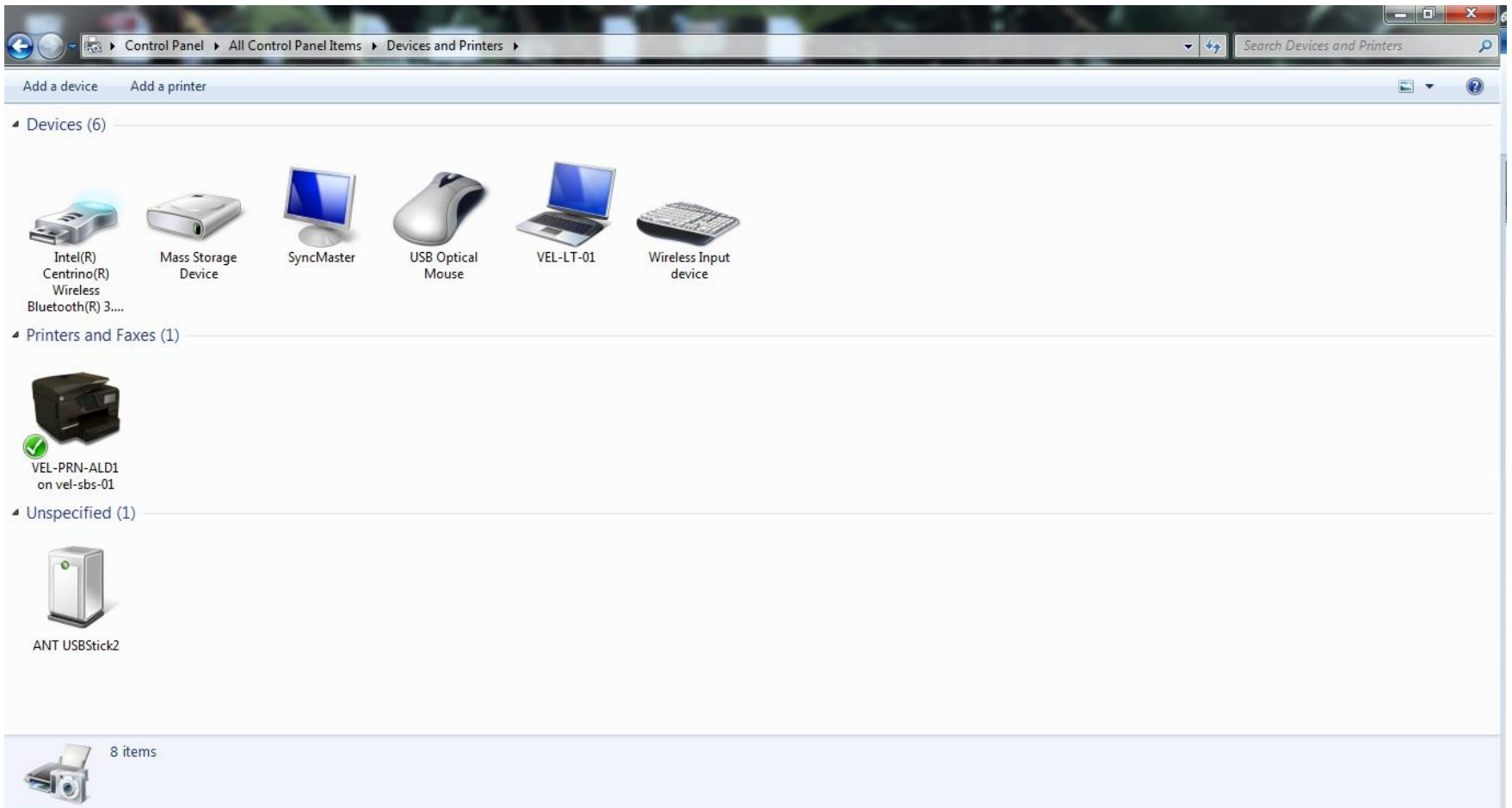
The screenshot displays the ROTOR Power Software 1.3 interface. A central dialog box titled "Connection error" is open, displaying a warning icon and the message: "Unable to find any ANT device. Please ensure that: * the ANT dongle is connected; * the cranks are switched on." The dialog has "OK" and "Close" buttons.

The software interface includes a menu bar (FILE, TOOLS, HELP) and a main control area with buttons for CONNECT, RECORD, and MAIN MENU. The SN field is set to AUTO DETECT and the BATTERY field is set to NO DATA. The interface also features a large digital display for POWER (0 WATTS) and CADENCE (0 RPM), a GRAPHIC area with a line graph, and various performance metrics such as BALANCE, TORQUE EFFECTIVENESS, and PEDAL SMOOTHNESS. The bottom right corner indicates the software is powered by AIP STUDIO.

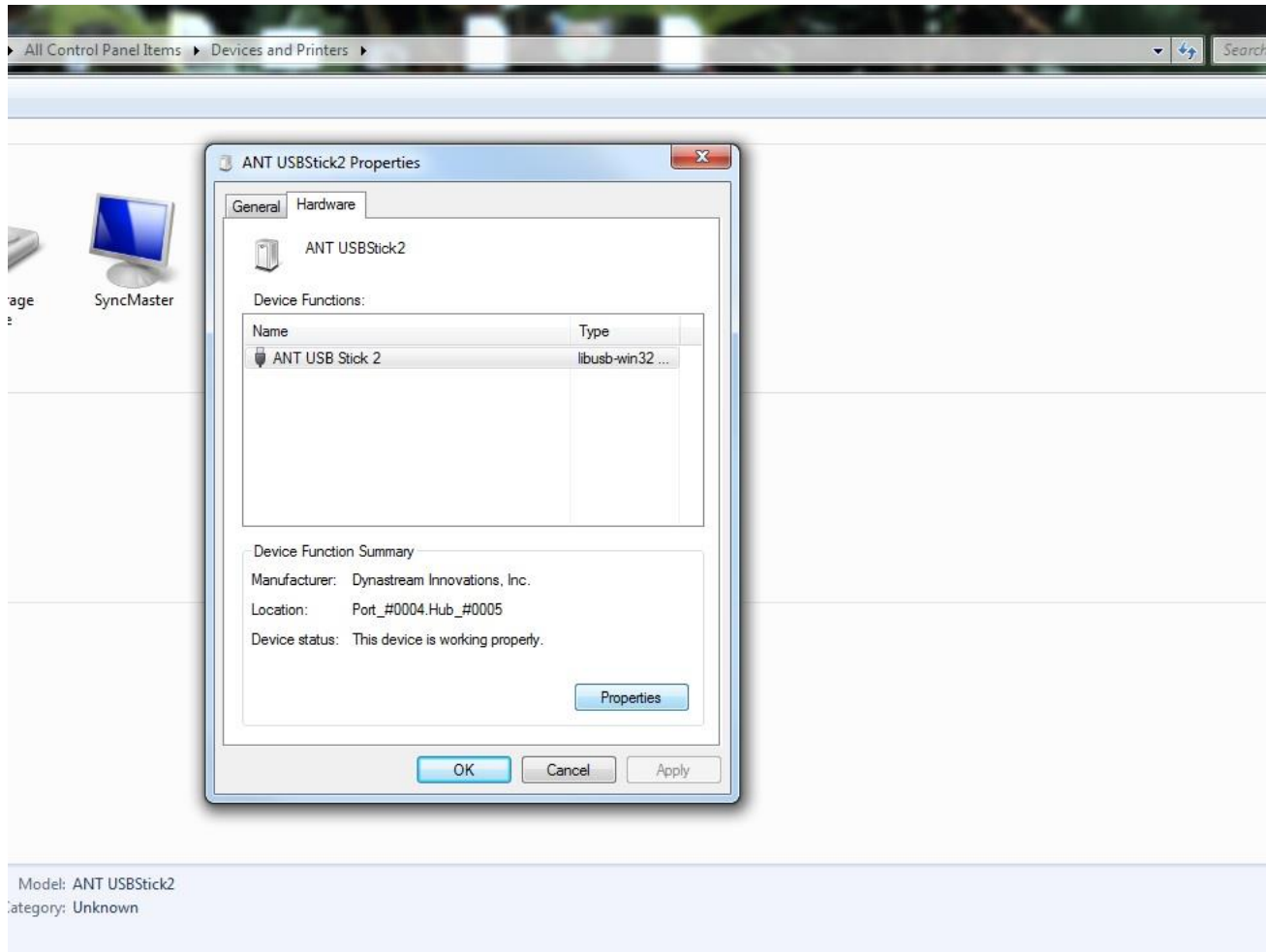


ig

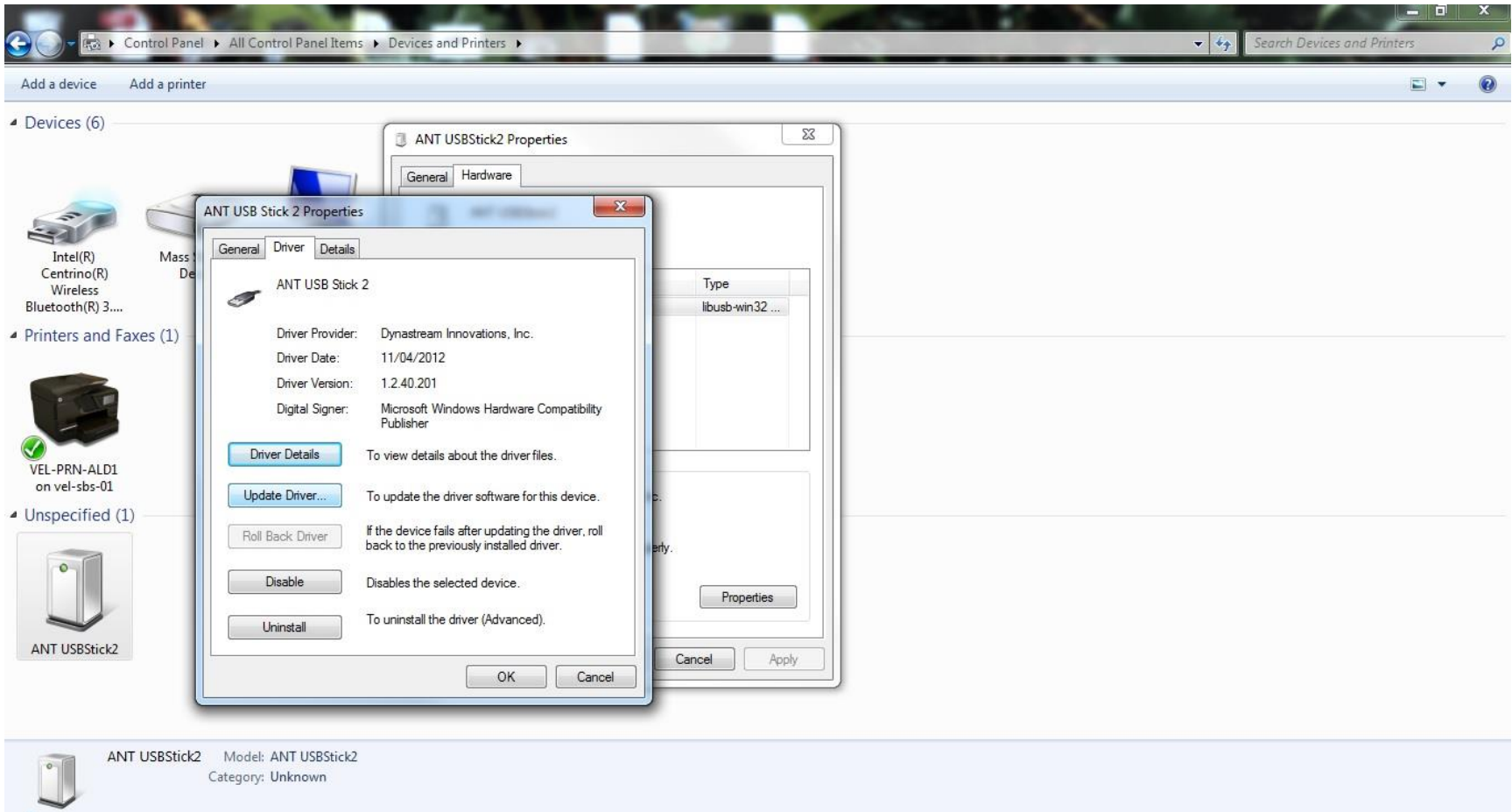
If the Rotor power software cannot detect your USB ANT+ device, the Drivers may not have installed correctly, To re-install Drivers first find the unit on the PC's Control Panel, this will be in "devices and Printers"



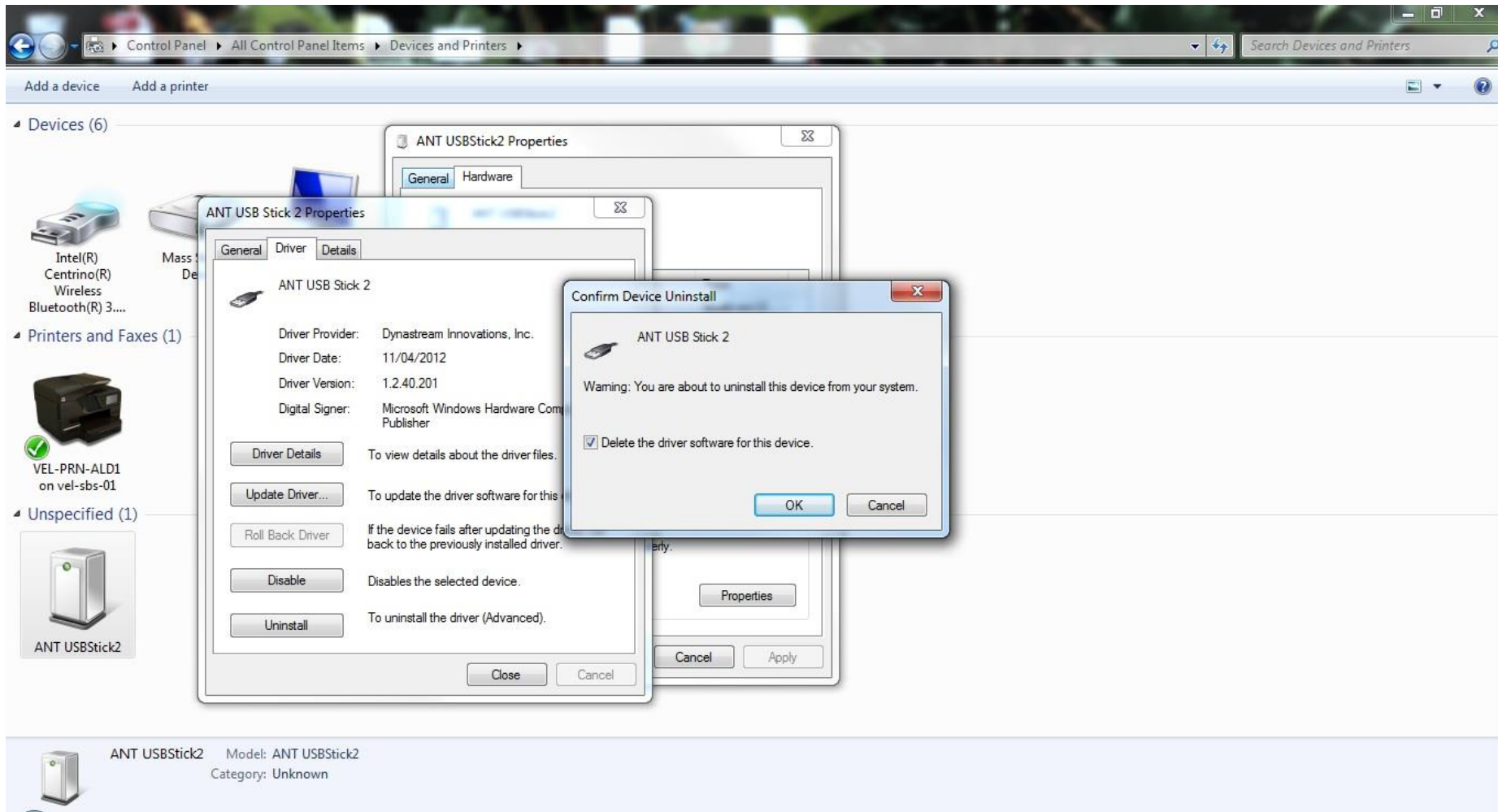
Select ANT USBStick2



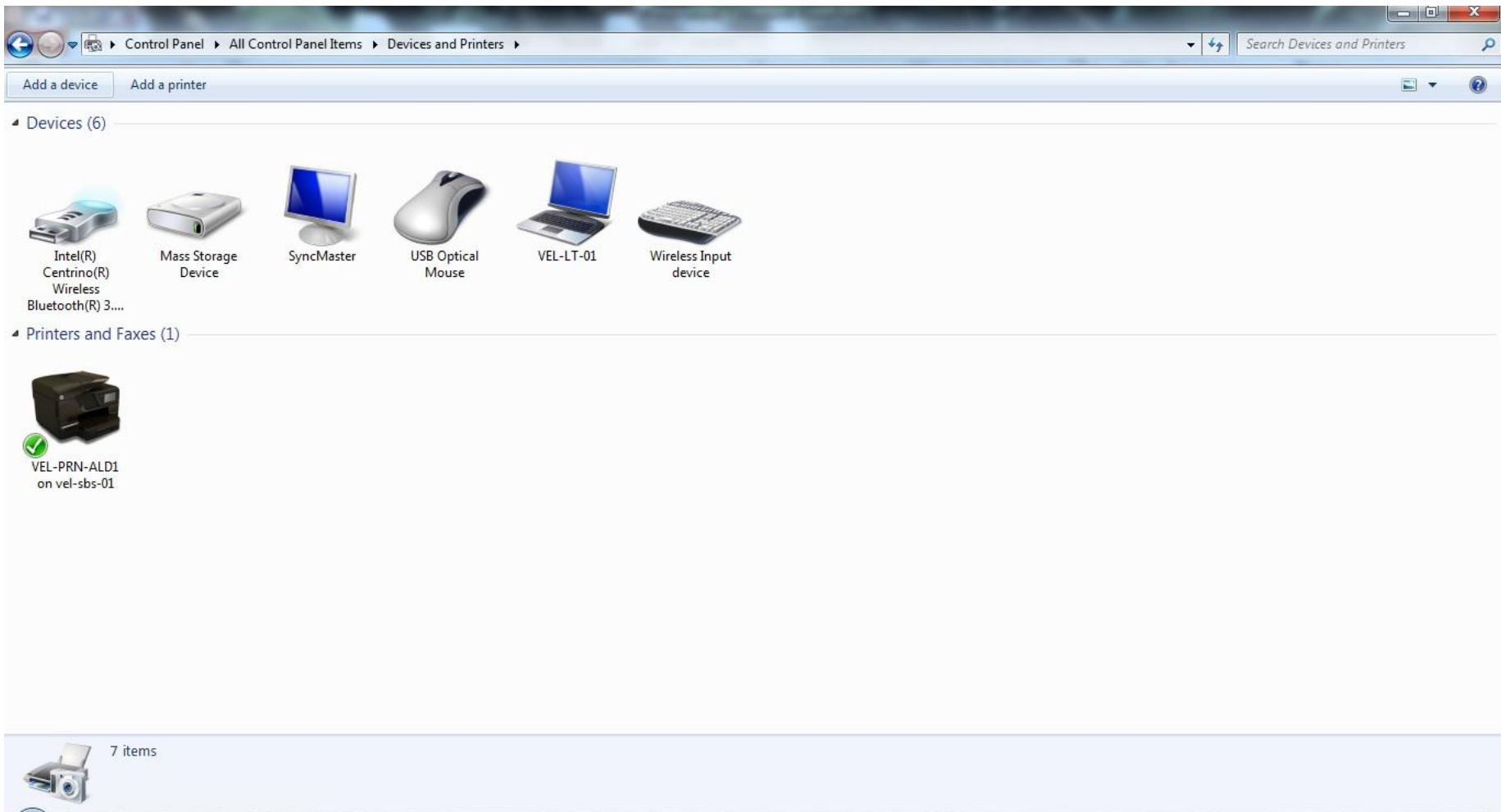
Double click "Properties" on the opened dialogue box



Now Select the "Driver" tab and click on "Uninstall"



Now Click "Delete driver software" and select "OK"



Now remove the USB device from the PC

Garmin: USB Drivers Upda x

www8.garmin.com/support/download_details.jsp?id=591

Sign in United States Search Garmin.com

GARMIN Explore Shop Maps Support

Home » On The Road » USB Drivers » Updates & Downloads

search Go

Updates & Downloads

USB Drivers software version 2.3.1

as of May 11, 2012

Download (5.09 MB)

[View installation instructions and system requirements](#)

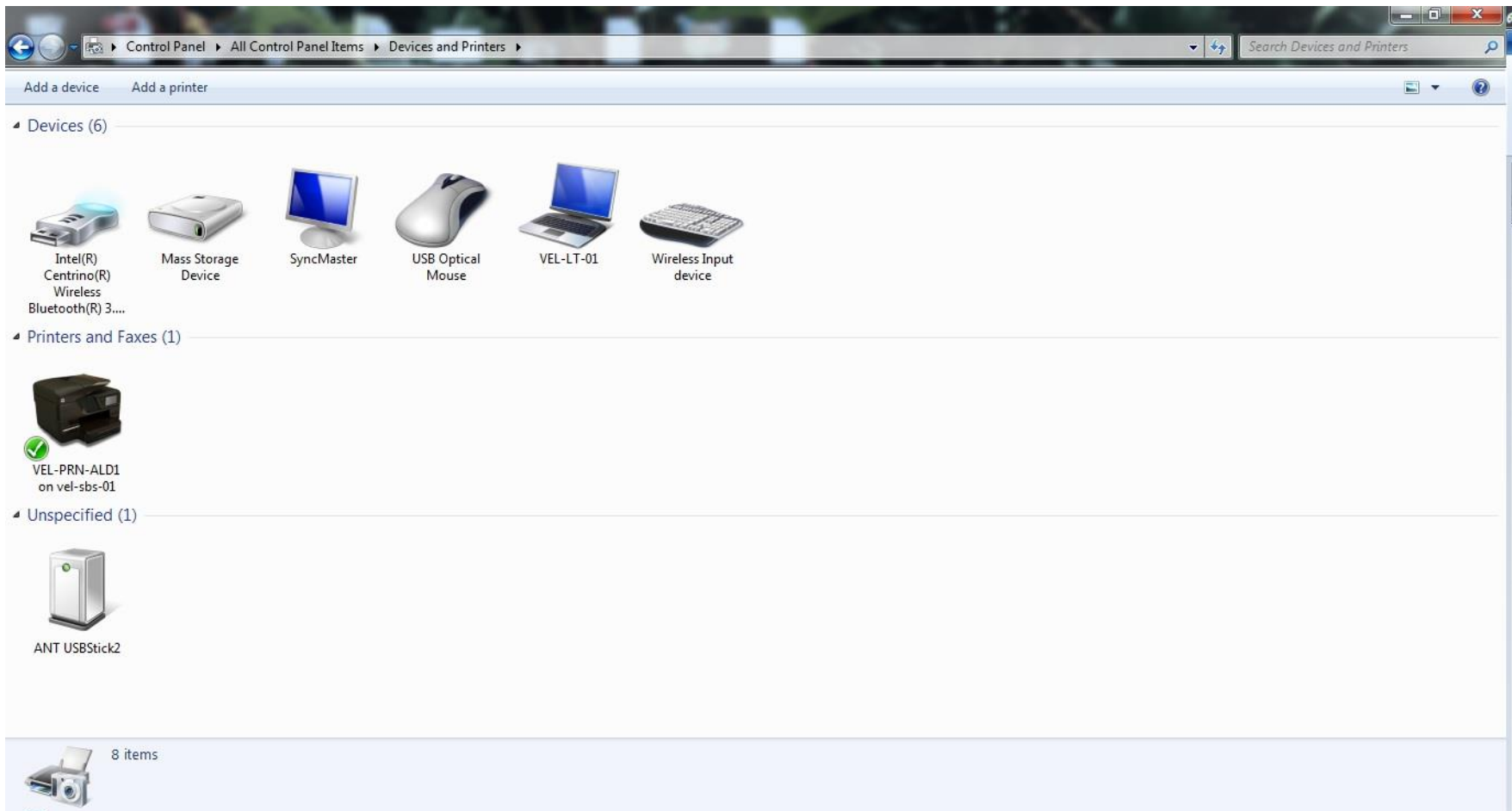
Notes:

- This setup will install / pre-load all Garmin USB Drivers on your system and upgrade older versions if found.
- These drivers are designed for use with those GPS units that support USB transfer of data to/from the PC - not to include the iQue. This setup also includes the drivers for the USB Data Card Programmer.
- This setup combines the initial install and updates for both the USB GPS drivers and the USB Data Card Programmer drivers.
- Garmin GPS USB Drivers support Windows XP 64-bit, Vista 64-bit, and Windows 7 64-bit.
- Garmin USB Data Card Programmer drivers do not support 64-bit operating systems at this time.
- Garmin GPS USB Drivers have passed the Microsoft Logo Certification testing (Winqual) for all OS's up to and including Windows 7 x64
- Simplified user interface.
- .NET framework 3.5 SP1 is required. A current version of .NET will be installed if needed.
- Windows Media Player 11 or greater is required (a free download from Microsoft).

Now visit

http://www8.garmin.com/support/download_details.jsp?id=591

Download the wizard and run the file



Now Re-insert USB device and open the Power software, The Power software should now find the ANT device and connect to the crank.



Contact Us:

www.rotorbike.com

www.rotoruk.co.uk

www.velotechservices.co.uk

Call: 0845 475 5339